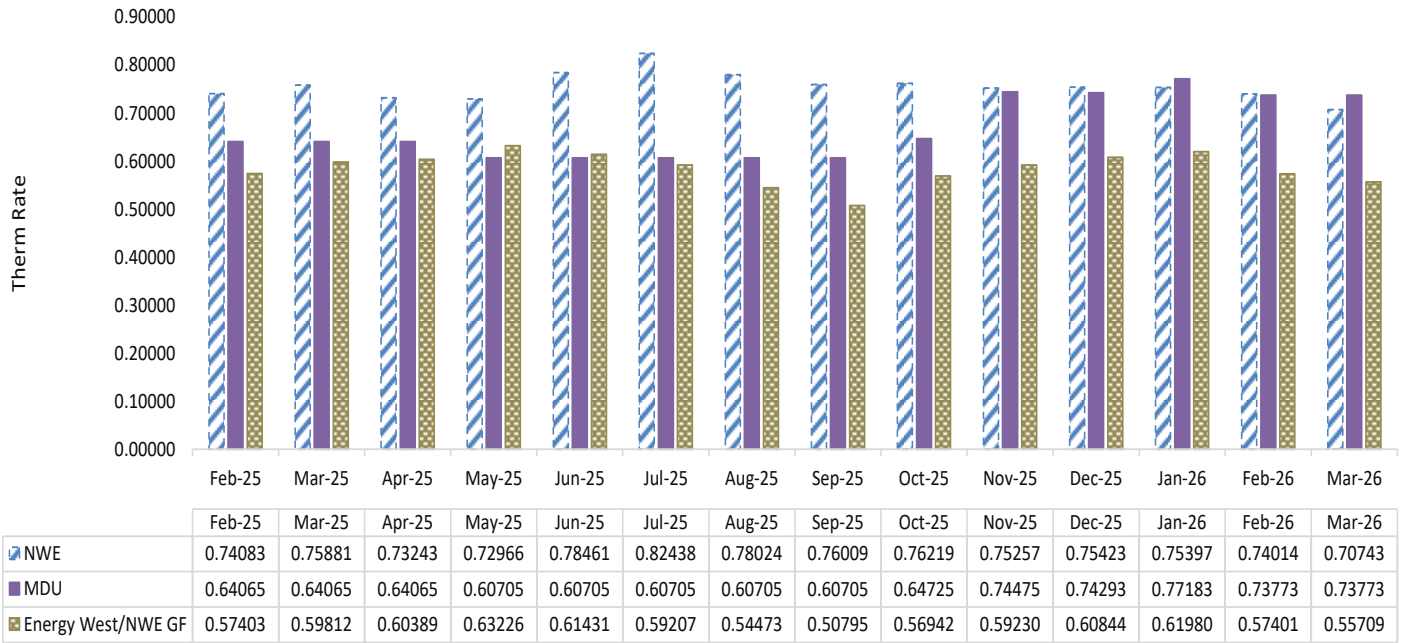


2026 Residential Rate Summary (as of the 1st day of each month)

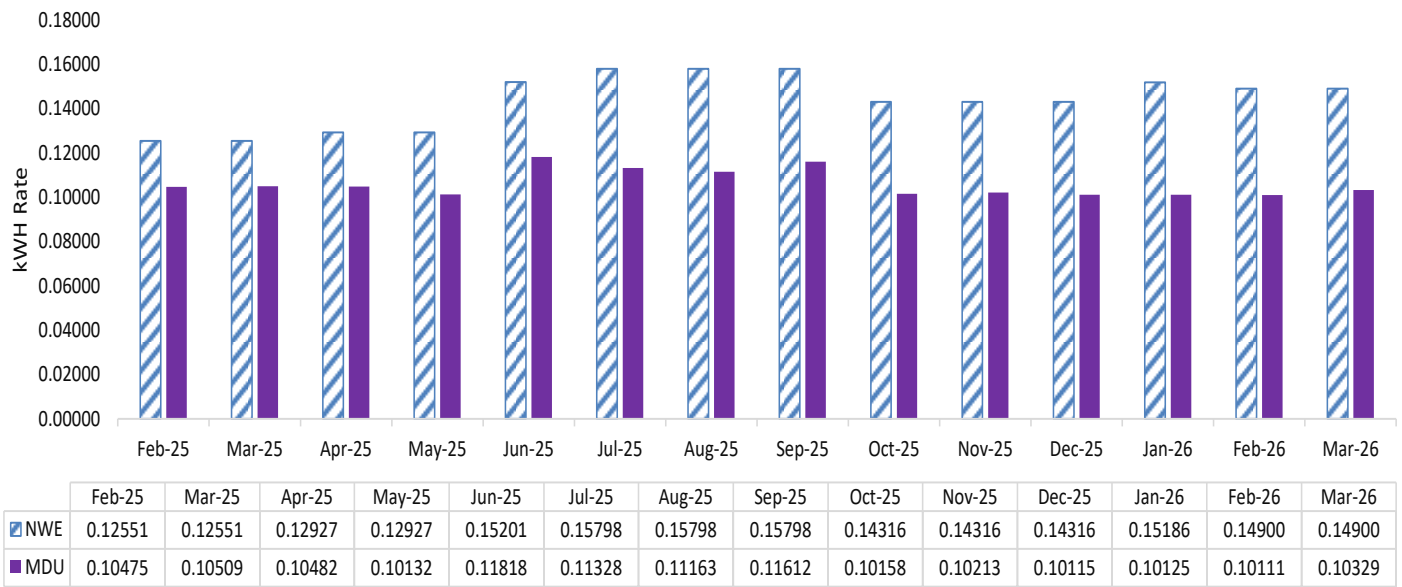
	NWE Gas (therm)	MDU Gas (dkt)	NWE GF (EW Gas) (ccf)	NWE Electric (kwh)	MDU Electric (kwh)
January					
Total Rate	\$.75397	\$7.7183	\$.55241	\$.151864	\$.101246
Supply Rate	\$.2217067	\$5.698	\$.24763	\$.076505	\$.02704
Service Chg	\$6.50/month	\$.33/day	\$6.73/month	\$4.20/month	\$.19/day
February					
Total Rate	\$.7401369	\$7.3773	\$.5116	\$.149004	\$.101106
Supply Rate	\$.182769	\$5.357	\$.20338	\$.072814	\$.0269
Service Chg	\$6.50/month	\$.33/day	\$6.73/month	\$4.20/month	\$.19/day
March					
Total Rate	\$.7074312	\$7.3773	\$.49652	\$.149004	\$.103286
Supply Rate	\$.1500633	\$5.357	\$.18836	\$.072814	\$.02908
Service Chg	\$6.50/month	\$.33/day	\$6.73/month	\$4.20/month	\$.19/day
April					
Total Rate	\$	\$	\$	\$	\$
Supply Rate	\$	\$	\$	\$	\$
Service Chg	\$/month	\$/day	\$/month	\$/month	\$/day
May					
Total Rate	\$	\$	\$	\$	\$
Supply Rate	\$	\$	\$	\$	\$
Service Chg	\$/month	\$/day	\$/month	\$/month	\$/day
June					
Total Rate	\$	\$	\$	\$	\$
Supply Rate	\$	\$	\$	\$	\$
Service Chg	\$/month	\$/day	\$/month	\$/month	\$/day
July				*	
Total Rate	\$	\$	\$	\$	\$
Supply Rate	\$	\$	\$	\$	\$
Service Chg	\$/month	\$/day	\$/month	\$/month	\$/day
August					
Total Rate	\$	\$	\$	\$	\$
Supply Rate	\$	\$	\$	\$	\$
Service Chg	\$/month	\$/day	\$/month	\$/month	\$/day
September					
Total Rate	\$	\$	\$	\$	\$
Supply Rate	\$	\$	\$	\$	\$
Service Chg	\$/month	\$/day	\$/month	\$/month	\$/day
October					
Total Rate	\$	\$	\$	\$	\$
Supply Rate	\$	\$	\$	\$	\$
Service Chg	\$/month	\$/day	\$/month	\$/month	\$/day
November					
Total Rate	\$	\$	\$	\$	\$
Supply Rate	\$	\$	\$	\$	\$
Service Chg	\$/month	\$/day	\$/month	\$/month	\$/day
December					
Total Rate	\$	\$	\$	\$	\$
Supply Rate	\$	\$	\$	\$	\$
Service Chg	\$/month	\$/day	\$/month	\$/month	\$/day

Total Natural Gas Rate in Therms

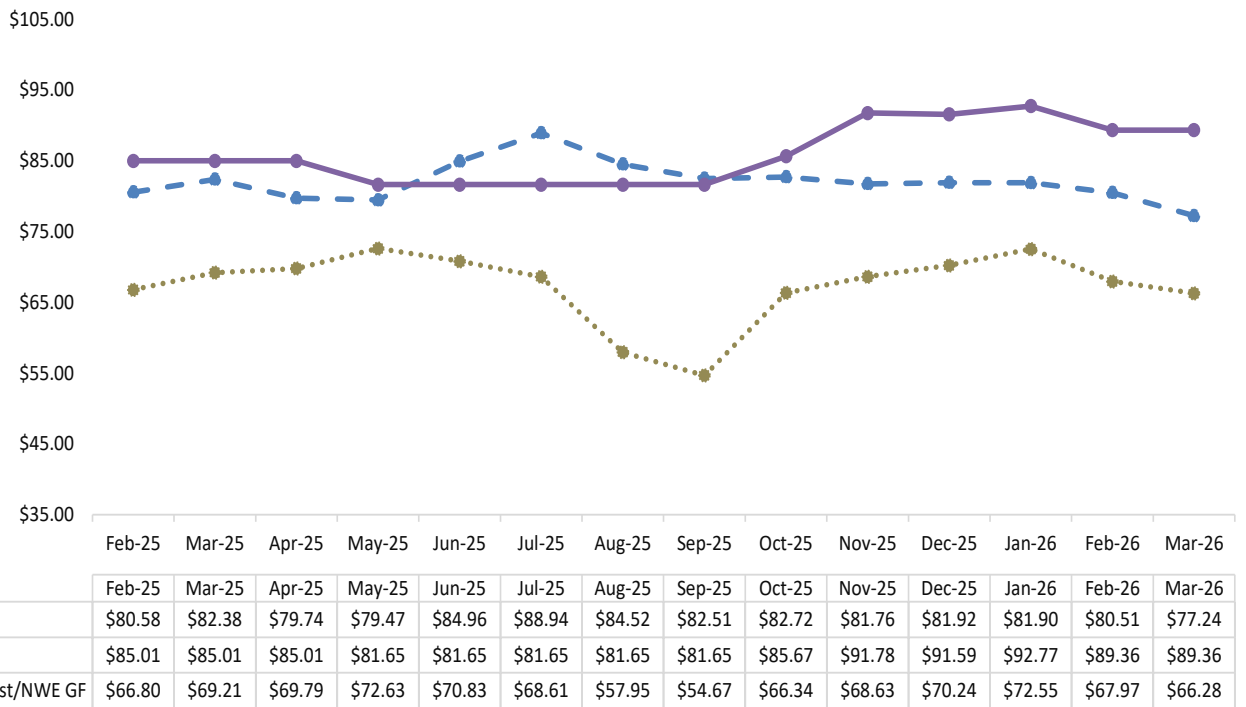


NorthWestern Energy Great Falls (NWE GF) is formerly Energy West

Total Electric Rate in kWh

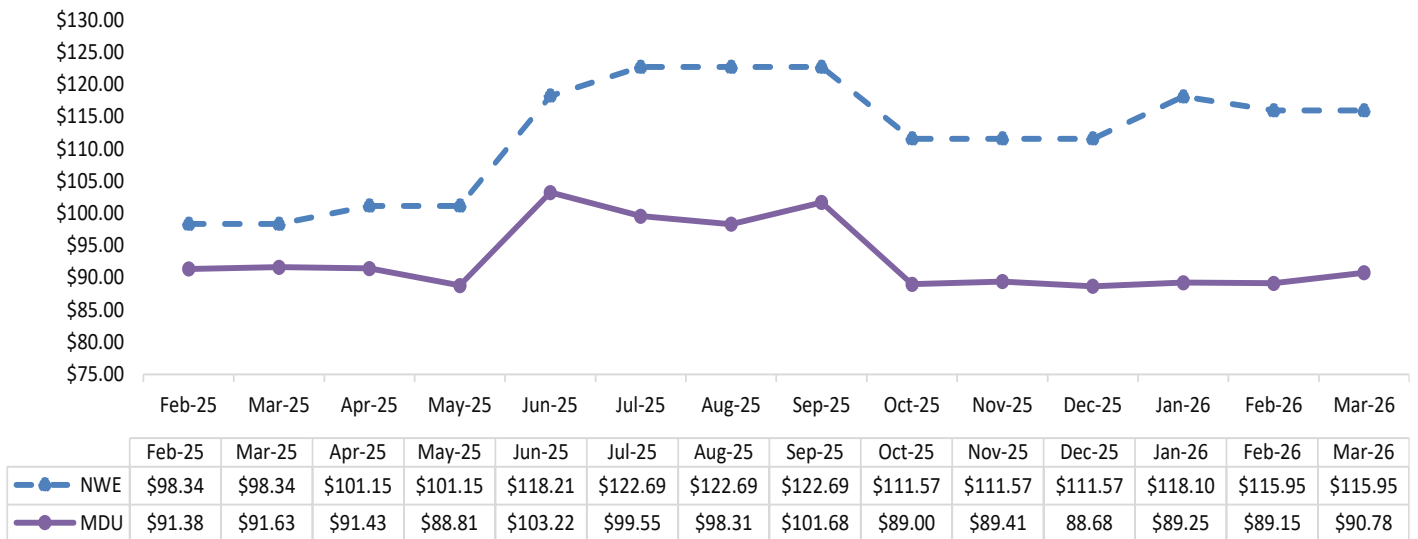


Average Bill - Natural Gas Assume 30 days/100 therms



NOTE: From February 1, 2025, through October 31, 2025, MDU's average gas bill included an interim rate increase of \$27.955% applied to the monthly service charge and the energy charge (Docket 2024.05.061)

Average Bill - Electric Assume 30 days/750 kwh



NOTES AND DISCLAIMERS:

This document reflects rates shown on tariffs filed and processed for each utility as of the first day of the month. Mid-month changes are not reflected on this document until the subsequent month.

Gas supply rates for each company may include transportation and storage costs from other parties.

Montana Dakota Utilities (MDU) electric power supply costs consist of fuel used in its generating stations, energy purchases from MISO, capacity purchases, generating station pipeline charges, and reagent costs.

NorthWestern Energy (NWE) electric supply rate includes the annual variable costs associated with the production and procurement of energy supplies which is calculated annually through its Power Costs and Credit Adjustment Mechanism (“PCCAM”). In addition, it includes the recovery of certain fixed costs approved in its last electric general rate case.

NWE gas supply rate includes the cost of gas and gas transportation from other suppliers, as well as the Battle Creek, Bear Paw, and Devon revenue requirements.

Tax tracking adjustments are included in the total rate for NWE gas and NWE electric; and are included in the average bill for MDU gas, MDU electric, and NWE Great Falls (formerly Energy West).

SOURCES:

NWE: <https://www.northwesternenergy.com/billing-payment/rates-tariffs/rates-tariffs-montana>

MDU: <https://www.montana-dakota.com/rates-services/rates-tariffs/>

NWE Great Falls: <https://www.northwesternenergy.com/billing-payment/rates-tariffs/rates-tariffs-montana/great-falls-natural-gas>